



**NordKran**

Sicheres Heben auf engstem Raum



**SPX1275**









NordKran GmbH

Lange Wand 20, 27753 Delmenhorst | Telefon: +49 (0)4221 591-0 | Telefax: +49 (0)4221 591-18

info@nordkran.de | www.nordkran.de



	SPX1275	 6800
	Abnehmbares Gewicht	1500
	8T-D10	60
	PP400-11DV	105
	JIB3500G JIB1500.3HL JIB1500.1FL	60 480 265



Inklusive hydraulisch verstellbares Kettenfahrwerk



5730 x 1450 x 2040 mm



4750 x 4750 mm






7500 kg






17,8 m

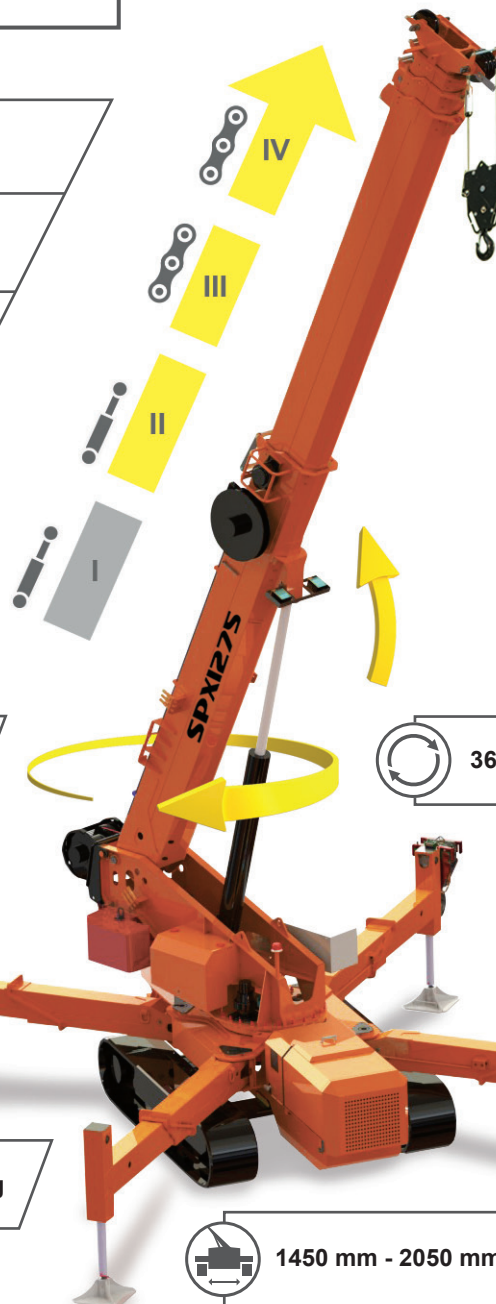


27,5 m

	Kubota V1505-E3B
	26,2KW 35,6PS
	400 V / 11 kW

	1500 kg 125 m - Ø 10 mm 30/50 m/min
---	---

		
7500 kg	5	-23 m
6000 kg	4	-29 m
4500 kg	3	-37 m
3000 kg	2	-52 m
1500 kg	1	-116 m



 4,9m - 17,7 m / 65 sek.


 360° / 1 U/min

 11 kW  
400 VAC

 6800 kg

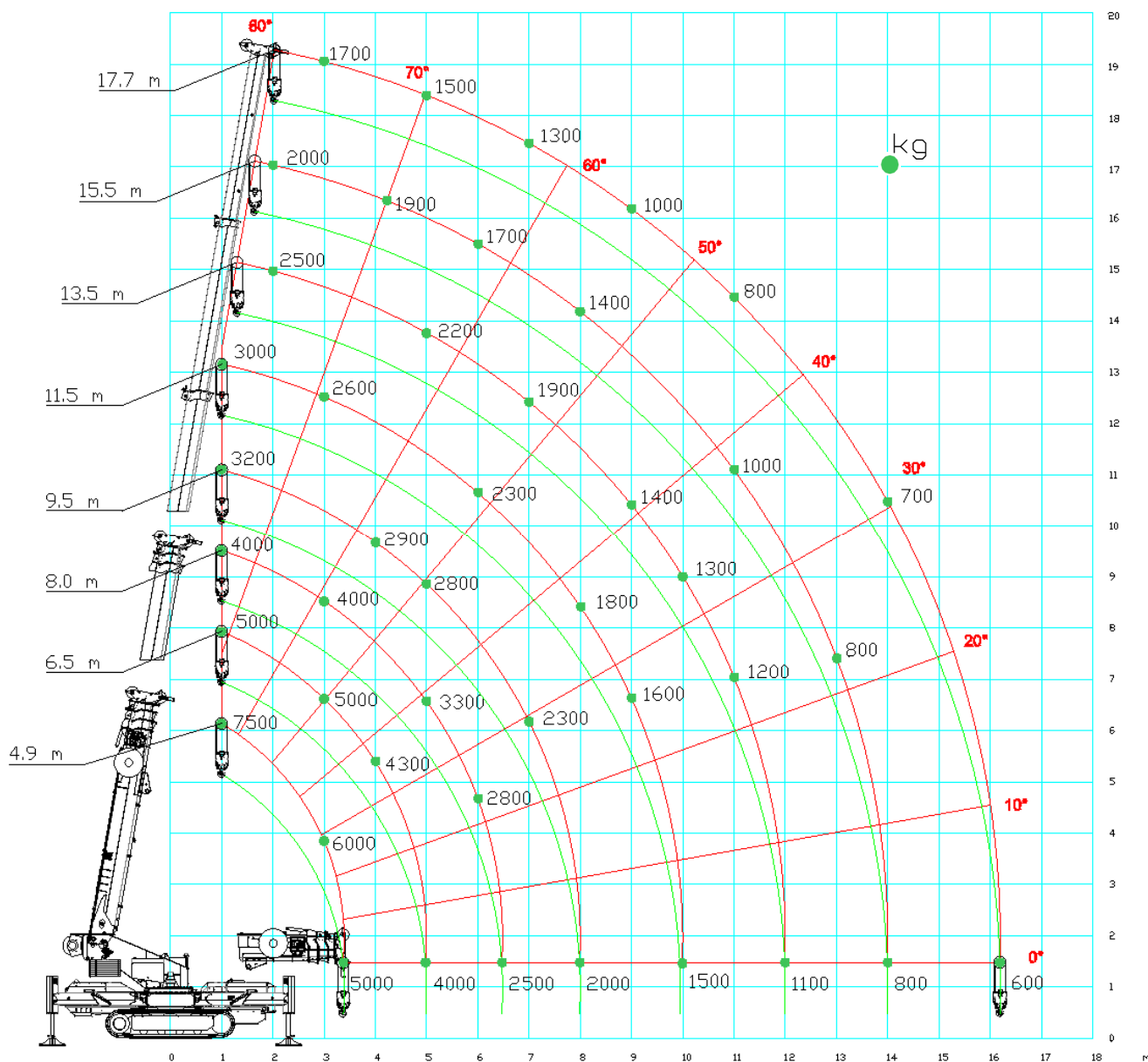
 1450 mm - 2050 mm

 20°

 0,72 kg/cm<sup>2</sup>

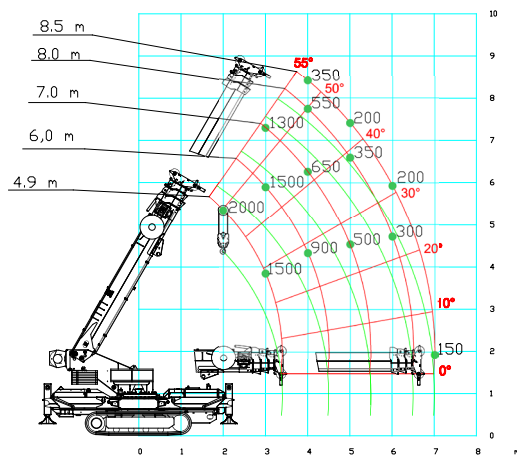
 1,6/3,1 km/h

# Hauptausleger

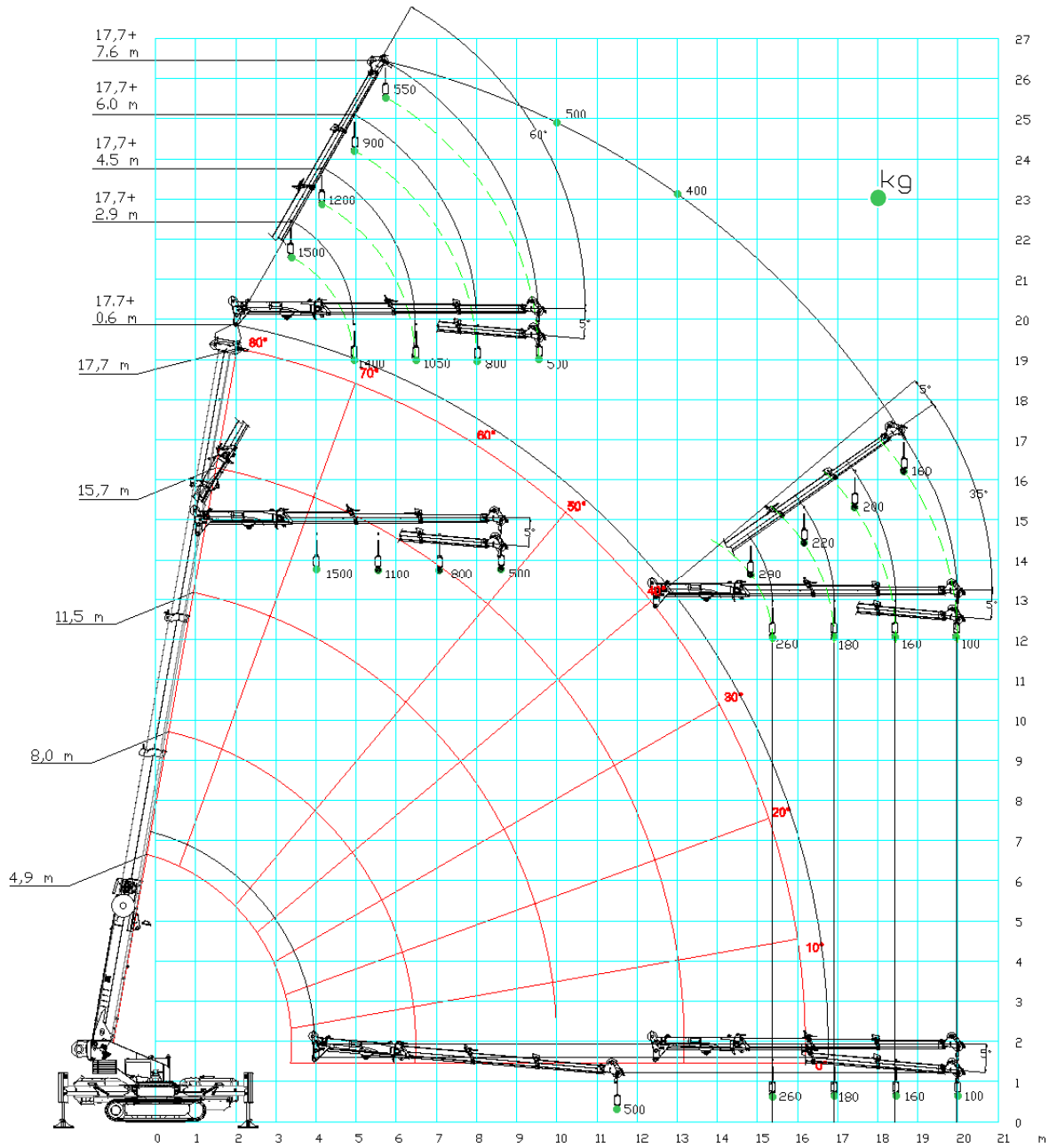






- 100%
- 360°
- MAX 2000 kg

## Pick & Carry

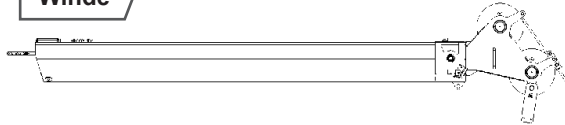


# Windenmodus mit JIB1500.3HL

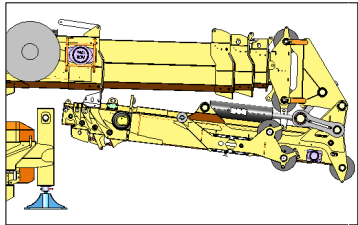
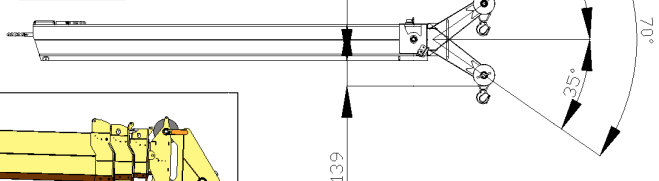


-  100%
-  360°
-  1500 kg
-  Winde

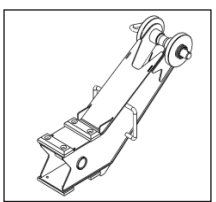
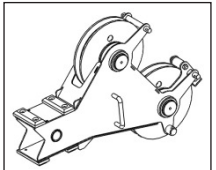
**Winde**



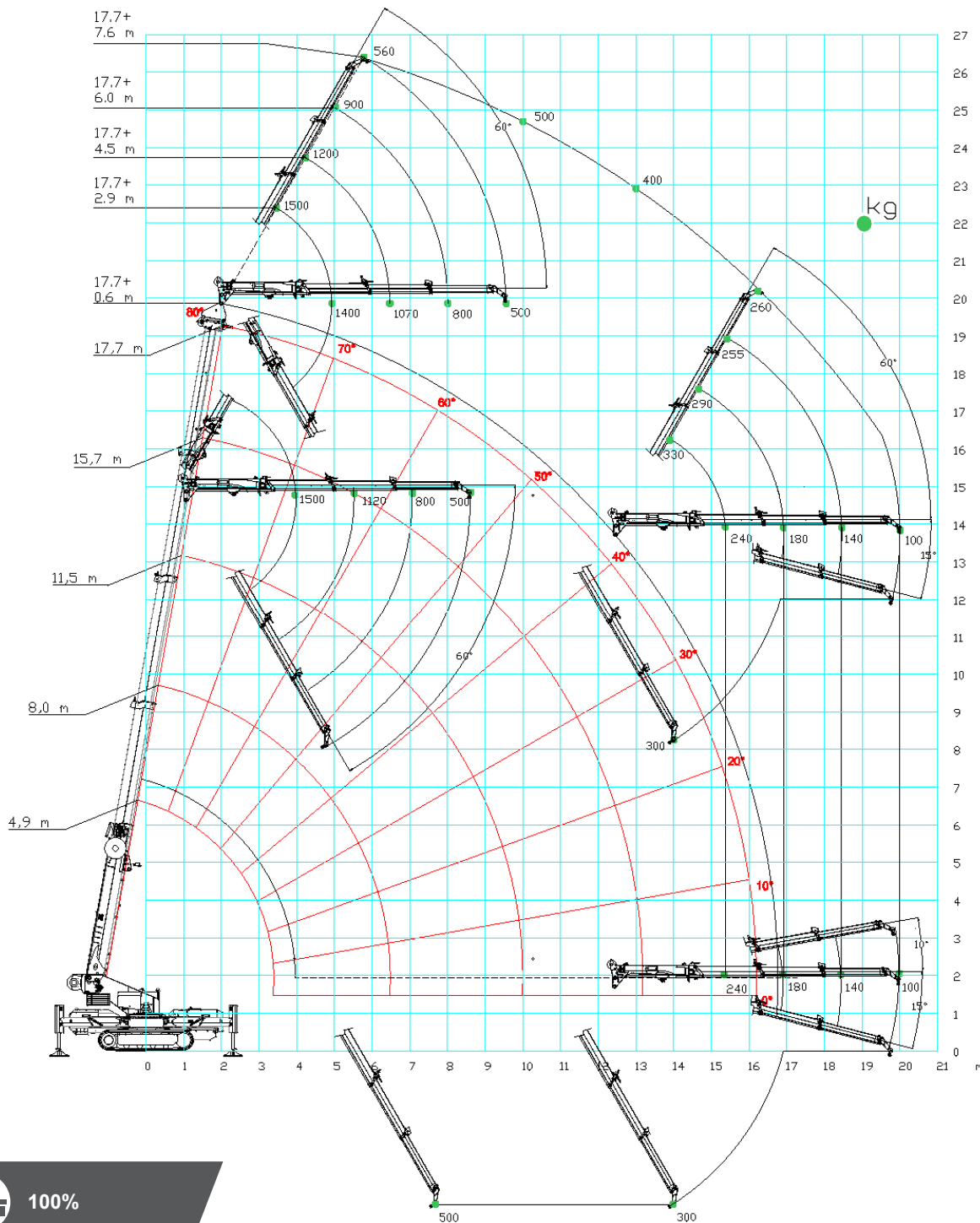
**Haken**







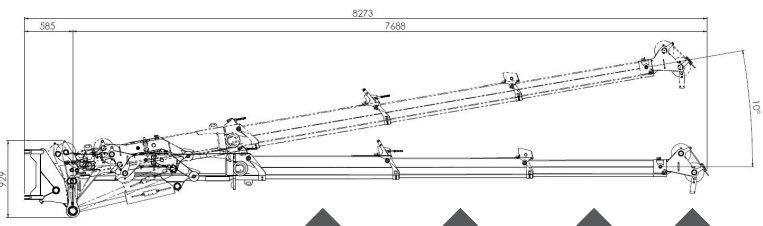
**Rangier-Position**



# Hakenmodus mit JIB1500.3HL

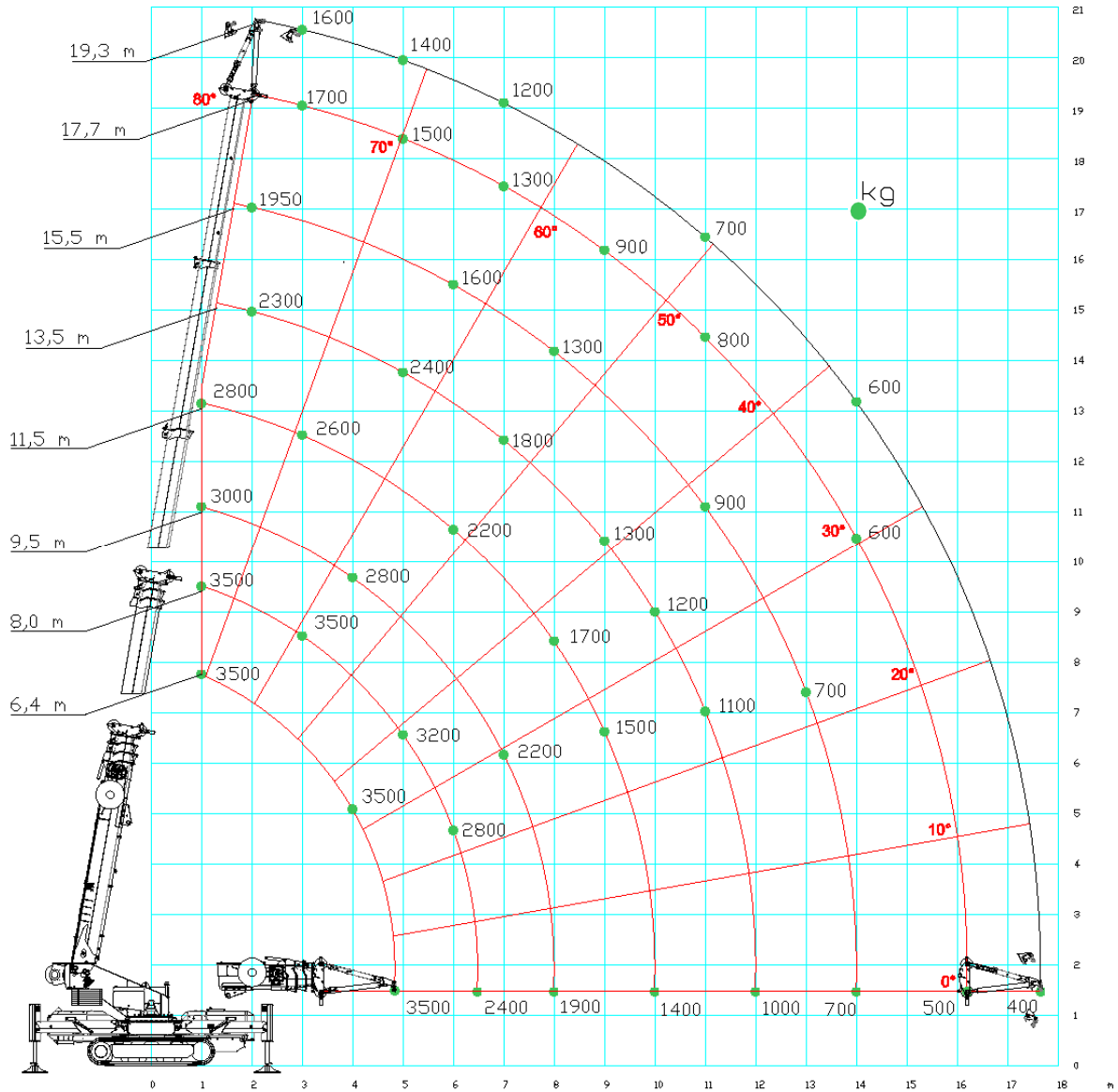


-  100%
-  360°
-  1500 kg
-  Haken



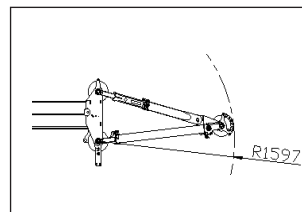
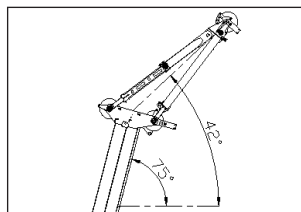
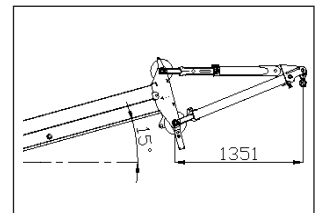
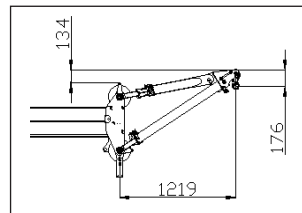
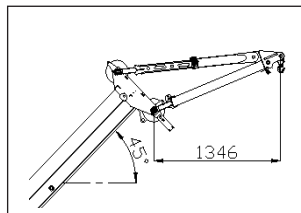
- 1500 kg**
- 1000 kg**
- 800 kg**
- 500 kg**

# Hakenmodus mit JIB3500G



## Haken (3,5 t)

- 100%
- 360°
- 1500 kg
- Haken / Winde





# Sicheres Heben auf engstem Raum.



**NordKran GmbH**

Lange Wand 20, 27753 Delmenhorst

Telefon: +49 (0)4221 591-0

Telefax: +49 (0)4221 591-18

[info@nordkran.de](mailto:info@nordkran.de)

[www.nordkran.de](http://www.nordkran.de)

**Niederlassung Hamburg**

Bredowstr. 10, 22113 Hamburg

Telefon: +49 (0)4221 591-0

Telefax: +49 (0)4221 591-18

[info@nordkran.de](mailto:info@nordkran.de)

[www.nordkran.de](http://www.nordkran.de)

**Niederlassung Herne**

Börsinghauser Str. 38a, 44627 Herne

Telefon: +49 (0)2323 1376835

Telefax: +49 (0)2323 1379954

[info@nordkran.de](mailto:info@nordkran.de)

[www.nordkran.de](http://www.nordkran.de)



Alle technischen Angaben unter  
Vorbehalt nach Datenstand 04.2016.